

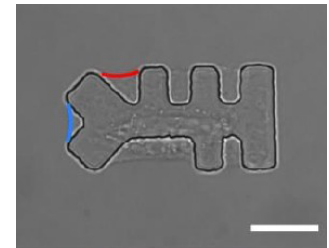
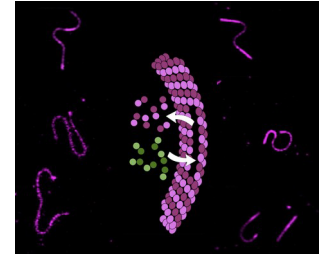


# Symposium: Living matter in a complex environment and morphogenesis

LIPHY Seminar room, Tuesday 26 November 2024

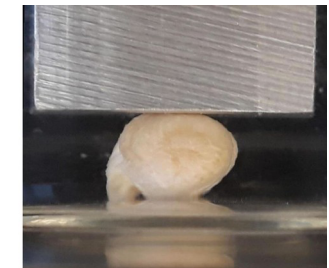
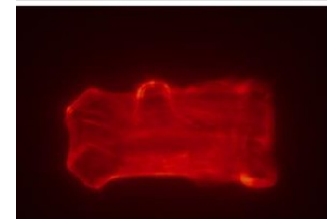
9am : cytoskeleton

- Laura Schaedel, Physics dept, Univ Saarlandes  
*Microtubules: fragile, yet resilient*
- Atef Asnacios, Matière et Systèmes Complexes, Univ Paris Cité  
*Disentangling the contributions of stress fibres and the unbundled actin meshwork to the anisotropy of cortical tension in response to cell shape*
- –Discussion–



10.45am : tissue

- Jonathan Fouchard, Lab Biologie du Développement, Sorbonne Univ, Paris  
*Reconstituted fibrous tissue mechanics*
- Philippe Marmottant, LIPHY, Grenoble  
*Two illustrations of the swelling of plant tissues: the dramatic bending of Spathiphyllum and the strong pressure of chickpeas*
- –Discussion–



12.15pm – Lunch

2pm : tissue

- Marc Durand, Matière et Systèmes Complexes, Univ Paris Cité  
*Dynamics and self-organization of confluent cellular systems: a numerical investigation*
- Angélique Stéphanou, TIMC, Grenoble  
*Is tumor metabolism abnormal? Investigation through a multiscale model of tumor growth*
- –Discussion–

